



Control your property rental time remotely, securely, economically, and easily

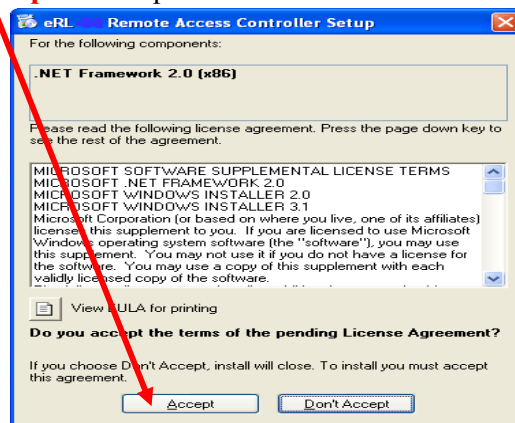
Quick Reference for eRL-FE595 System Setup

Step 1 – Insert the **eRL Remote Access Controller** installer CD, which comes with your order, into your computer's CD/DVD driver. The setup program should run automatically. If not, double click the setup.exe file in the CD. The installation steps are self guided.

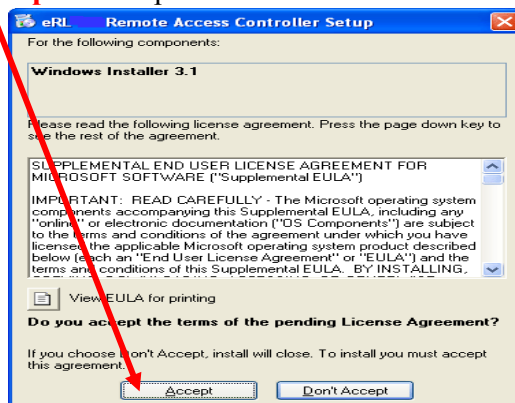
Step 2 – Install Microsoft .Net Framework 2.0

*If your computer hasn't installed the **Microsoft .NET Framework 2.0** and **Windows Installer 3.1**, the installer CD will try to install them on your computer as **Step 2a** to **Step 2c**. Otherwise go to **Step 3** directly.*

Step 2a – Click **Accept** to accept to install **.NET Framework 2.0**.

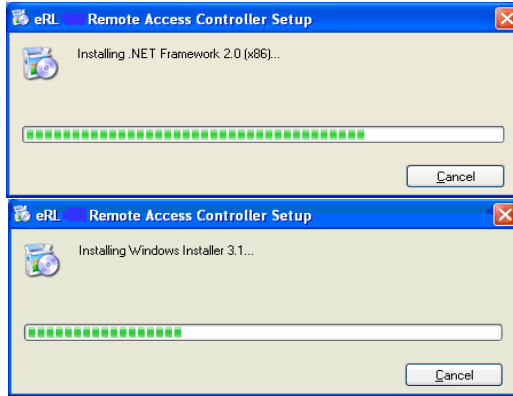


Step 2b – Click **Accept** to accept to install **Windows Installer 3.1**.





Control your property rental time remotely, securely, economically, and easily



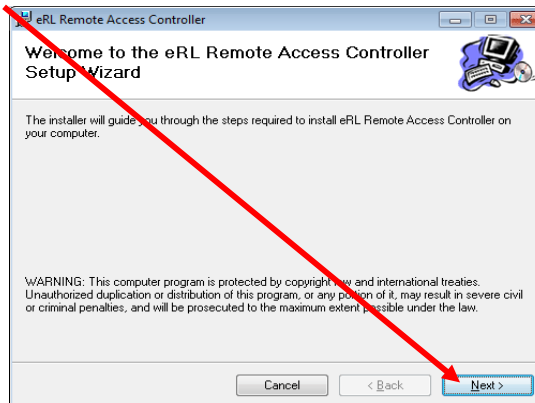
Step 2c – After installation is finished, you must reboot your computer. Click **Yes** to reboot now.



Step 3 – Install eRL Remote Access Controller Program

After reboot the computer, the installer CD will try to install eRL Remote Access Controller program on your computer automatically.

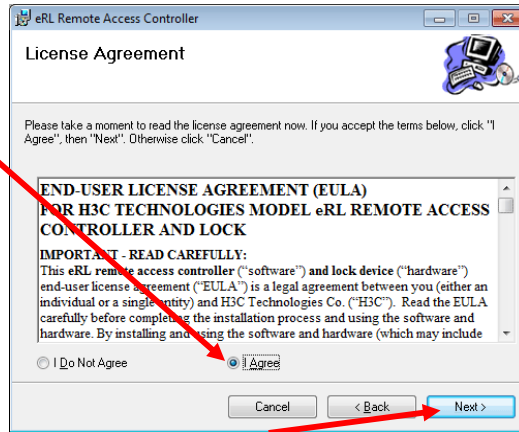
Step 3a – Click **Next** to continue.





Control your property rental time remotely, securely, economically, and easily

Step 3b – Read the End User Agreement carefully. If you accept the agreement, click **I Agree**.

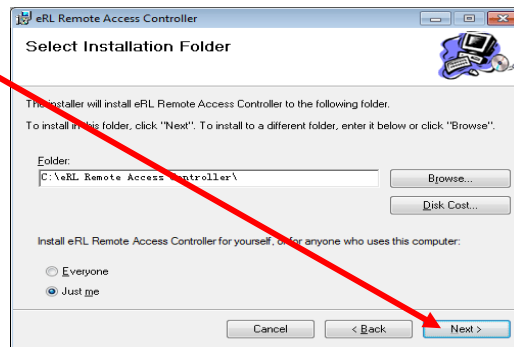


Then click **Next** to continue.

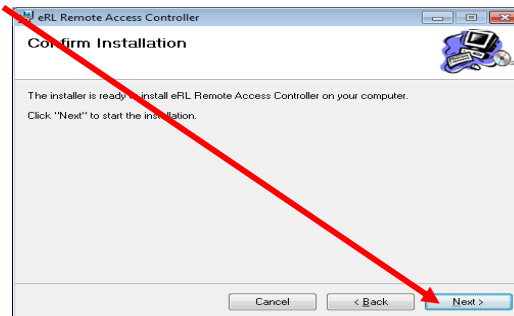
Step 3c – Select the Program installation folder.

If you want to change the default folder, do not select the folder in C:\Program Files\ directory.

Click **Next** to continue.



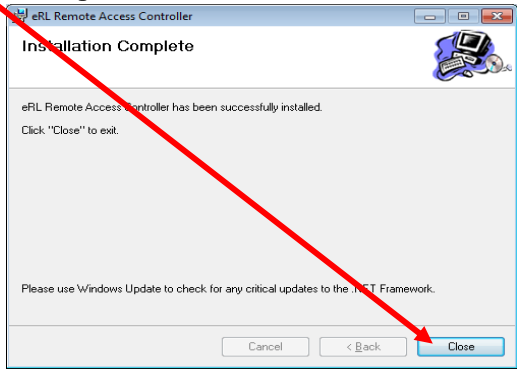
Step 3d – Click **Next** to continue.






Control your property rental time remotely, securely, economically, and easily

Step 3e – Click **Close** to complete the installation.

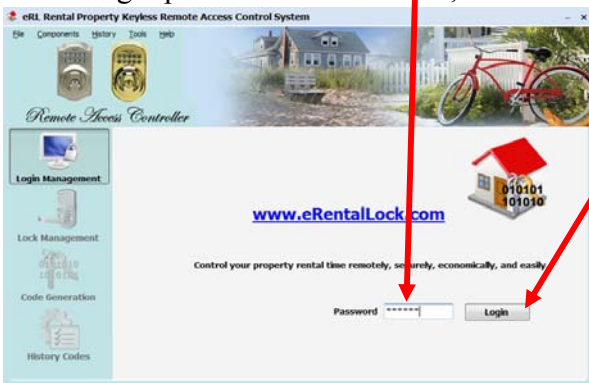


Step 4 – Run the eRL Remote Access Controller Program

Double click the  icon on your desktop to run the eRL Controller.

Step 5 – Login the Program

Input factory default login password 123456 **here**, then click **Login here**.



Step 6a – Change the Login password

Click **Login Management**.

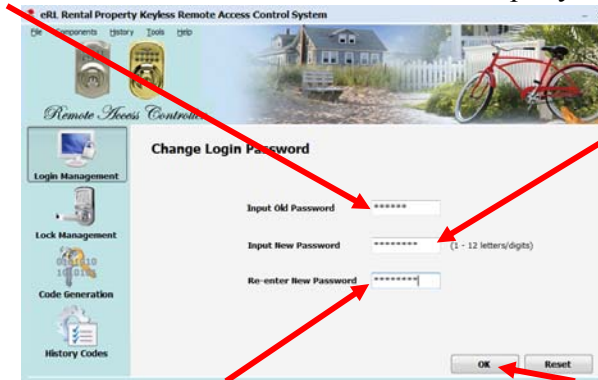




Control your property rental time remotely, securely, economically, and easily

Step 6b – Change the factory default Login password into your own password

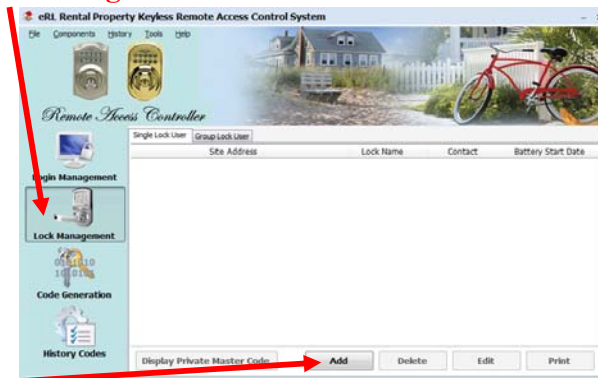
1. Input **123456**.
2. Input your new password **here**.



3. Input your new password **here** again.
4. Click **OK**.

Step 7a – Register the new Lock with the eRL Controller

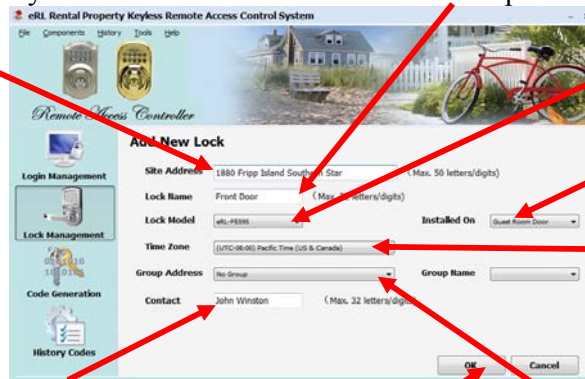
1. Click **Lock Management** icon.



2. Click **Add** to register the new **Lock** with the **Program**.

Step 7b – Fill in the registration information for the new Lock

1. Input property address.
2. Input lock name.
3. Select lock model as **eRL-FE595**.
4. Select the lock as **Guest Room Door**.
5. Select the time zone where the property is located.
6. Select the group as **No Group**.
7. Input the contact person name.
8. Click **OK**.

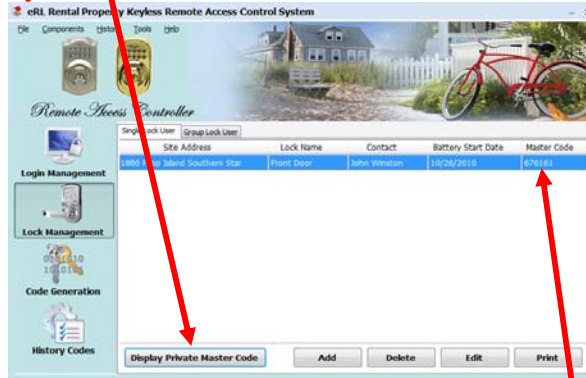




Control your property rental time remotely, securely, economically, and easily

Step 7c – Note down Master Code for the new Lock setup

1. Click **Display Private Master Code**.



2. Note down the **Master Code** for the new **Lock**, e.g. **676161**.

Step 8 – Install battery and connect power for the new Lock:

Connect the **wire harness** first, and then connect the **9V battery**.



Step 9 – Set the new private Master Code for the new Lock

The new **Lock** default factory private **Master Code** is **123456**.

Set the new private **Master Code** noted down on **step 7c** for the new **Lock** as:

<Old private **Master Code** [SCHLAGE] 0 [SCHLAGE] new private **Master Code** [SCHLAGE] new private **Master Code** again>.

E.g. <**1 2 3 4 5 6** [SCHLAGE] 0 [SCHLAGE] **6 7 6 1 6 1** [SCHLAGE] **6 7 6 1 6 1**>.





Control your property rental time remotely, securely, economically, and easily



Step 10 – Check the new private Master Code setting for the new Lock

Check the new private **Master Code** setting for the new **Lock** as:

<**Private Master Code** [SCHLAGE] 3 [SCHLAGE] >.

E.g. <**6 7 6 1 6 1** [SCHLAGE] 3 [SCHLAGE] >.



If the lock can be unlocked, the new private **Master Code** setting is correct.

Step 11 – Set the date/time for the new Lock

Set the date/time for the new **Lock** as:

< **Private Master Code** [SCHLAGE] 1 [SCHLAGE] **YY MM DD HH MM** >.

*Keeping your convenience in mind, the system is designed to automatically adjust DST (Daylight Saving Time) time, so you don't need to adjust the **Lock** time when the DST time is start and end. If you are in DST time now, the time you set in the **Lock** must be the standard time (e.g. if the current DST time is 14:28, the standard time you set must be 13:28).*

*The **Lock** time is in 24 hour time format. The date and time **MUST** be entered in two digits*

*E.g. if the private **Master Code** is 676161 and the current date/time is **July 3, 2008, 5:06pm (DST time)**, you should set the **Lock** date/time as*

< **6 7 6 1 6 1** [SCHLAGE] 1 [SCHLAGE] **08 07 03 16 06** >



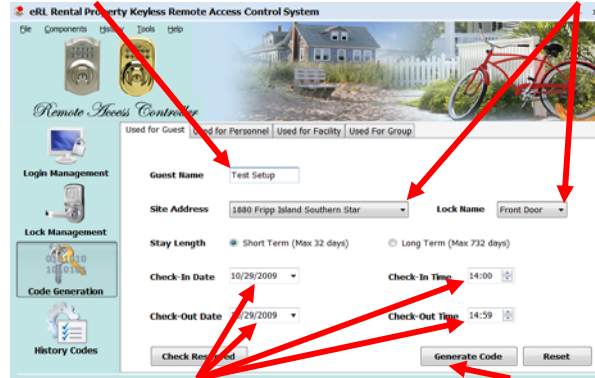


Control your property rental time remotely, securely, economically, and easily

Step 12 – Test your entire setup

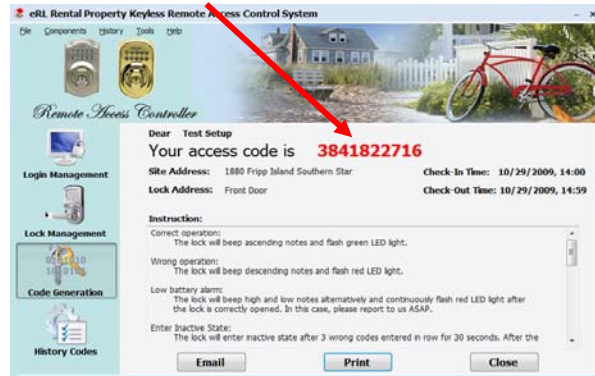
Step 12a – Generate one **Used For Guest** Access Code which is valid only in current hour. E.g. if current date/time is Oct. 29th, 2009, 14:32, then generate the **Used For Guest** Access Code which is valid from Oct 29th, 2009, 14:00 to Oct. 29th, 2009, 14:59 as follows.

1. Input the **Name**.
2. Select the new **Lock**.



3. Select current **Date/Time**.
4. Click **Generate Code**.

5. Note down the **Access Code**.



Step 12b – Enter the **Access Code** to check if the **Lock** can be successfully unlocked. If yes, then create an easy to remember **Personalized Code**, e. g. **123**

< **3 8 4 1 8 2 2 7 1 6** [SCHLAGE] **123** [SCHLAGE] >





Control your property rental time remotely, securely, economically, and easily

Step 12c – If the **Personalized Code** (e.g. 123) can unlock the **Lock** during the **Access Code** valid hour (e.g. from 14:00 to 15:00), and can **NOT** unlock the **Lock** right after the **Access Code** valid hour (e.g. after 15:01), then your entire setting is correct.

< 123 [SCHLAGE] >



Congratulation!
Your Lock is ready to use NOW!

**If you want to use web version program as well,
please continue the following steps.**



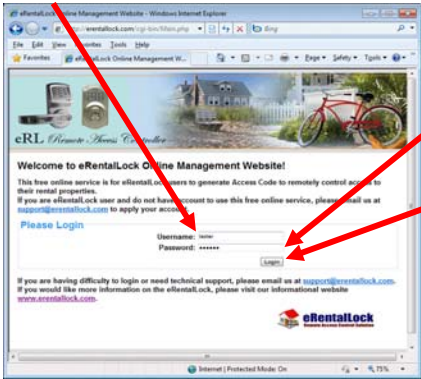
Control your property rental time remotely, securely, economically, and easily

Step 13 – Setup web version eRL Remote Access Controller program

If you don't have online account, please contact us at support@eRentalLock.com to apply the free online management program account.

Step 13a – Check out <http://erentallock.com/cgi-bin/Main.php> and login using your online account **User Name** and default Password as **123456**.

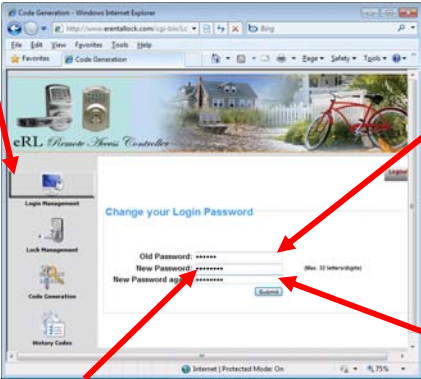
- 1. Input your **User Name**.
- 2. Input default password **123456**.



3. Click **Login**.

Step 13b – Change the default login password into your own password.

- 1. Click **Login Management**.
- 2. Input default password **123456**.



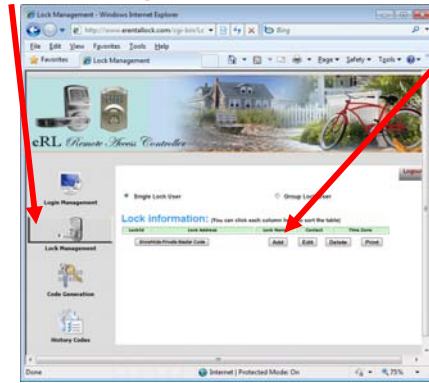
- 3. Input your own **Password**.
- 4. Input your own **Password** again.



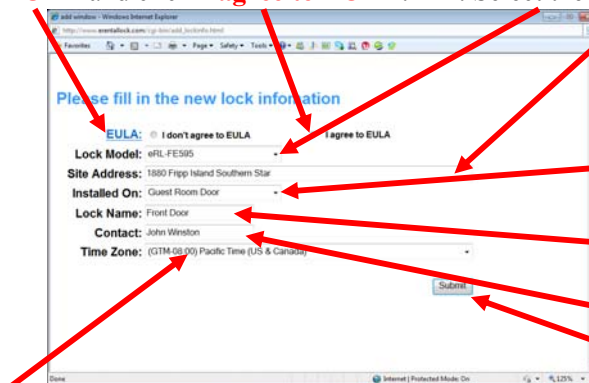
Control your property rental time remotely, securely, economically, and easily

Step 13c – Register the Lock with the web Program.

1. Click **Lock Management**.
2. Click **Add**.



3. Read the **EULA** and click **I agree to EULA**.
4. Select the Lock Model as **eRL-FE595**

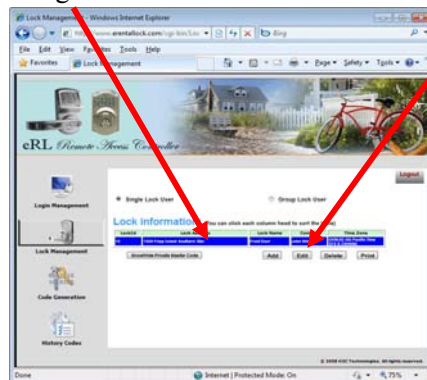


5. Type in the property address.
6. Select the lock as **Guest Room Door**.
7. Type in the lock name.
8. Type in the contact name.

9. Select the time zone where the property is located.
10. Click **Submit**.

Step 13d – Change the Master Codee for the registered Lock.

1. Click the registered **Lock**.
2. Click **Edit**.





Control your property rental time remotely, securely, economically, and easily

3. Click **Change Master Code**.

4. Type in the **Master Code** noted down on **Step 7c**.

5. Click **Submit**.

Step 13c – Check the Master Code.

1. Click **Show/Hide Private Master Code**.



2. Check the **Master Code** to make sure it's the same as noted down **Master Code** on **Step 7c**.

Now you can generate Access Code from both PC version program and web version program!



Control your property rental time remotely, securely, economically, and easily

Quick Reference for Lock Operation

Change PMC	Press PMC → Press SCHLAGE → Press 0 → Press SCHLAGE → Press New PMC → Press SCHLAGE → Repeat New PMC
Set Date/Time	Press PMC → Press SCHLAGE → Press 1 → Press SCHLAGE → Press Date/Time YYMMDDHHMM
Delete Unwanted AC By PMC	Press PMC → Press SCHLAGE → Press 2 → Press SCHLAGE → Press Unwanted AC
Unlock/Disable Vacation Mode	Press PMC → Press SCHLAGE → Press 3 → Press SCHLAGE
Change GMC	Press PMC → Press SCHLAGE → Press 4 → Press SCHLAGE → Press New GMC → Press SCHLAGE → Repeat New GMC
Erase Memory	Press PMC → Press SCHLAGE → Press 5 → Press SCHLAGE
Turn Beeper On/Off	Press PMC → Press SCHLAGE → Press 6 → Press SCHLAGE
Enable/Disable Thumbturn Function	Press PMC → Press SCHLAGE → Press 7 → Press SCHLAGE
Enable Vacation Mode	Press PMC → Press SCHLAGE → Press 8 → Press SCHLAGE
Delete Unwanted AC By AC	Press AC → Press SCHLAGE → Press Unwanted AC
Unlock By AC	Press AC
Create PC	Press AC → Press SCHLAGE → Press PC → Press SCHLAGE
Unlock By PC	Press PC → Press SCHLAGE
Restore All Factory Settings	 → Press SCHLAGE →  → Hold SCHLAGE

PMC - Private Master Code, 6 digits.

GMC - Group Master Code, 6 digits.

AC - Access Code, 10 digits.

PC - Personalized Code, 3-6 digits.